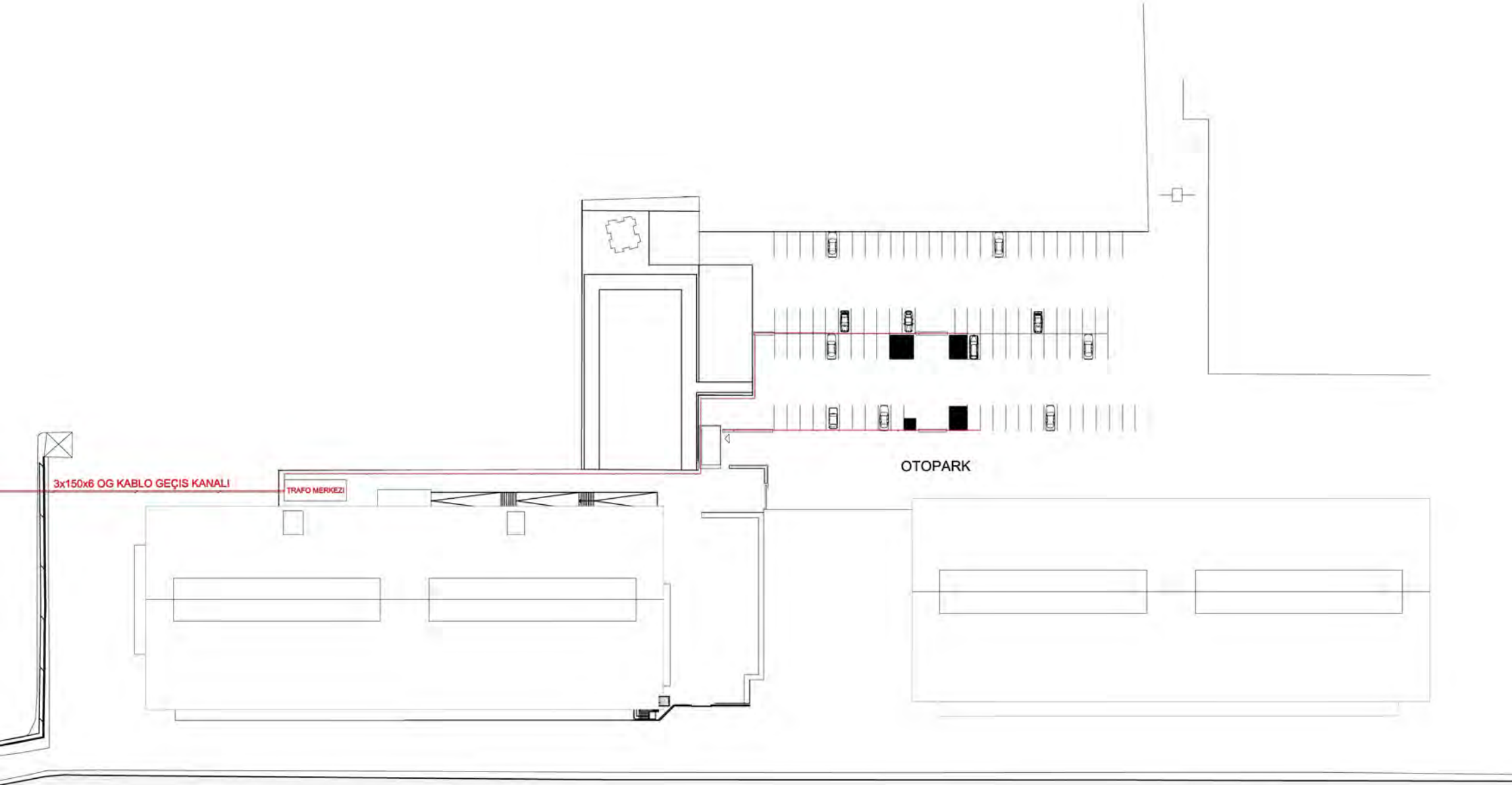


EV SİZ EV HOMELESS HOME
İSTANBUL MODERN

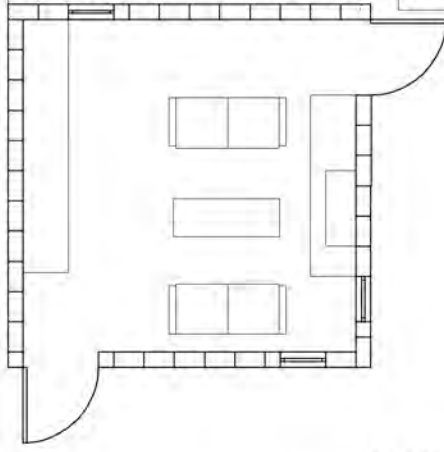


cdclp
BOĞAÇHAN DÜNDARALP

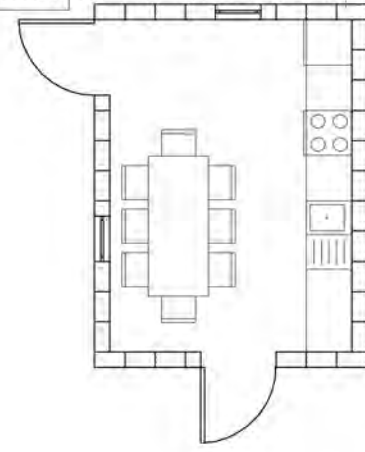


kablo hattı

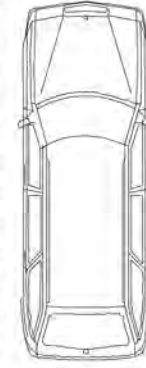
kablo hattı



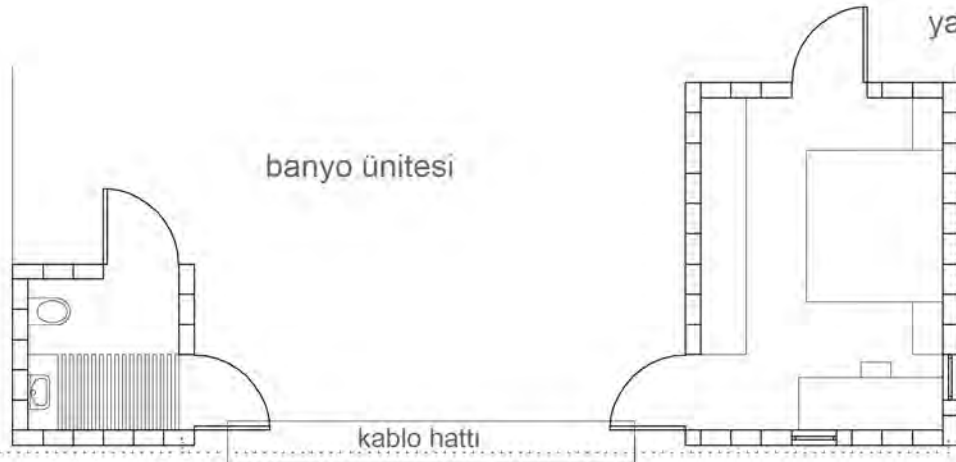
yaşama ünitesi



mutfak ünitesi



banyo ünitesi



yatak odası ünitesi

kablo hattı

kablo hattı



cdclp

“evsiz ev”

ünitelerin konumları; 1/200
İSTANBUL MODERN OTOPARKI

beton temel elemanları ve rotaların yerleşimi



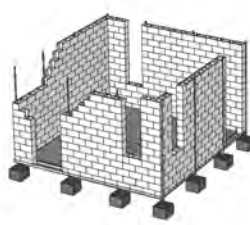
temel üzerine çelik döşeme strüktürünün oturması



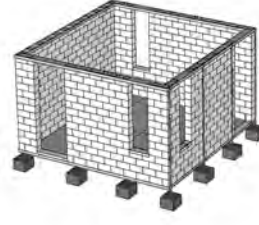
OSB elemanlarla döşeme yüzeyinin oluşturulması



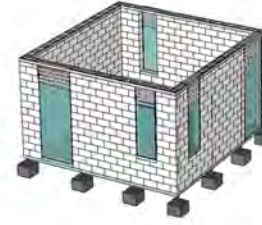
duvarların örülmesi



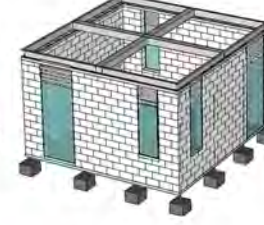
duvar üst sınırına çelik bitiş elemanının konulması



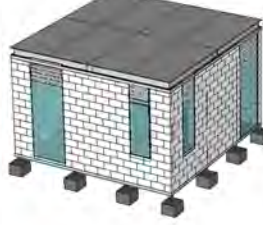
kapı ve pencere doğramalarının takılması



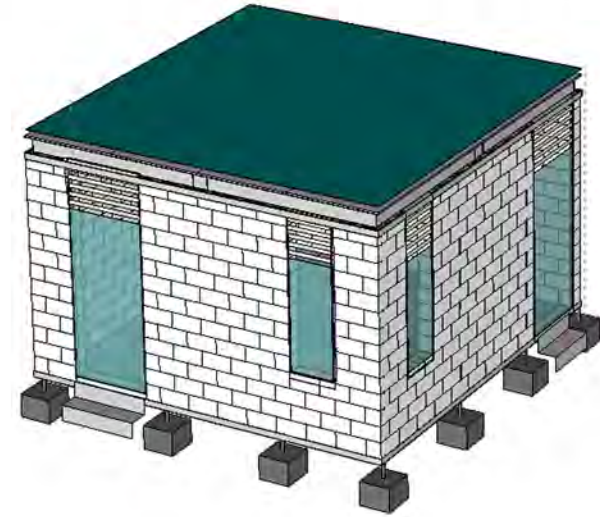
çelik çatı strüktürünün yerleşimi



OSB elemanlarla çatı yüzeyinin oluşturulması

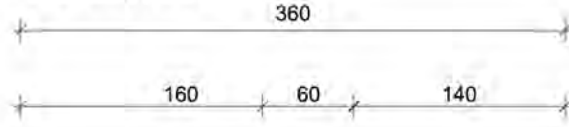


çatı yüzeyine su yalıtım tabakasının eklenmesiyle yapının tamamlanması

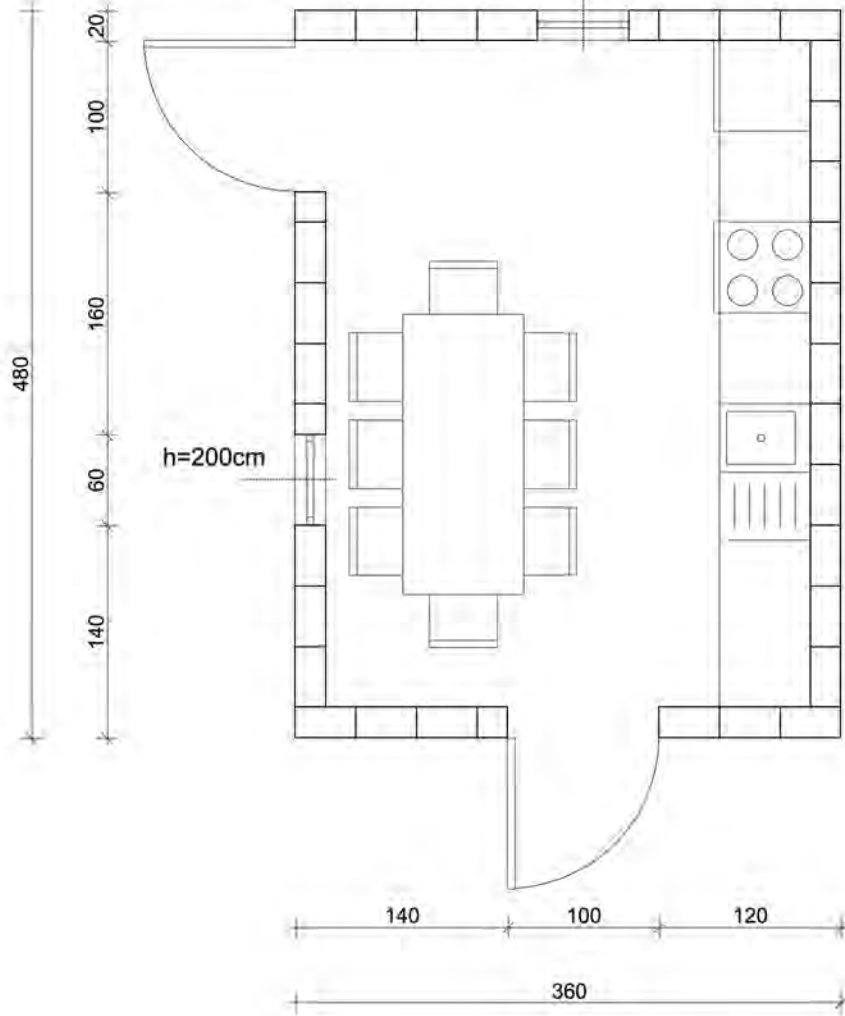


cdclp

▼ a cephesi

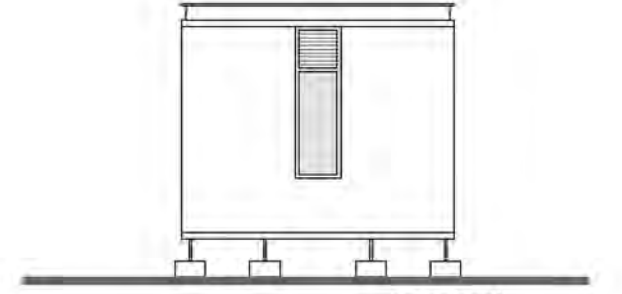


h=200cm

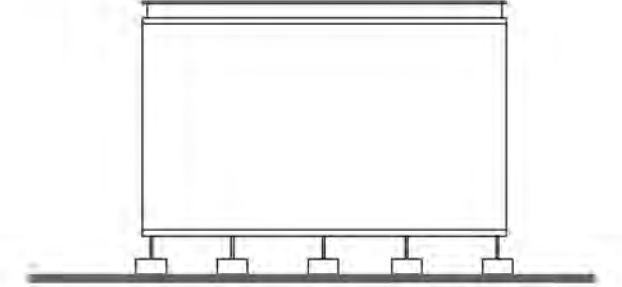


d cephesi

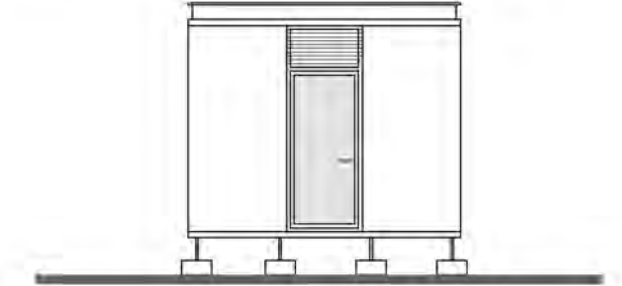
▲ b cephesi



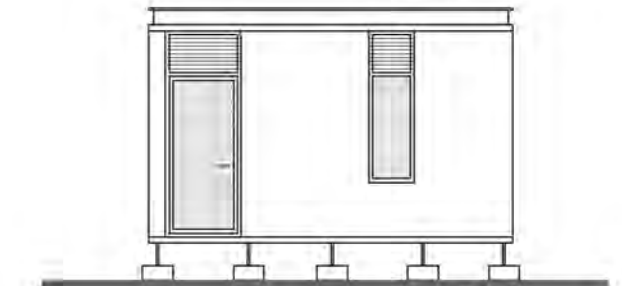
a cephesi



b cephesi



c cephesi



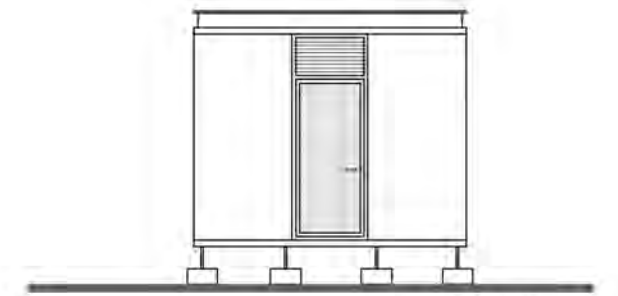
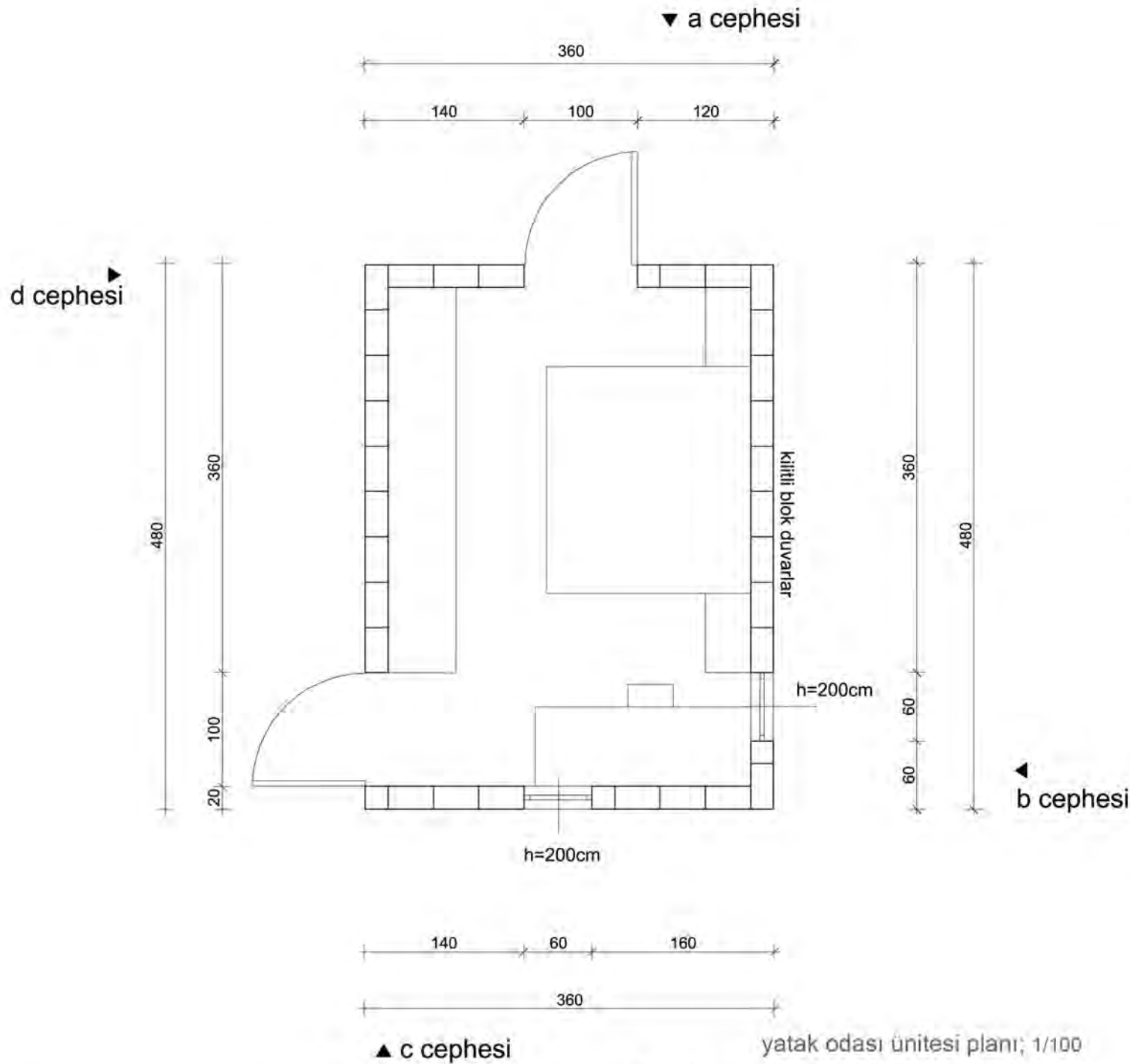
d cephesi

mutfak ünitesi planı; 1/100

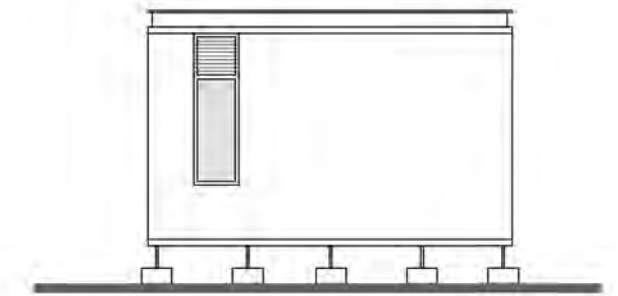
▲ c cephesi

cdclp

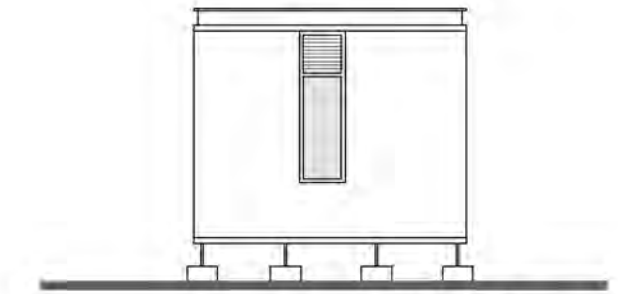
mutfak ünitesi cepheleri; 1/200



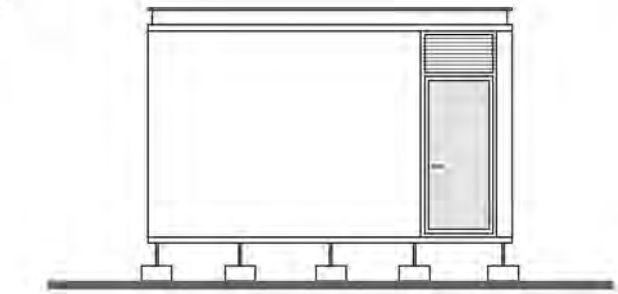
a cephesi



b cephesi



c cephesi

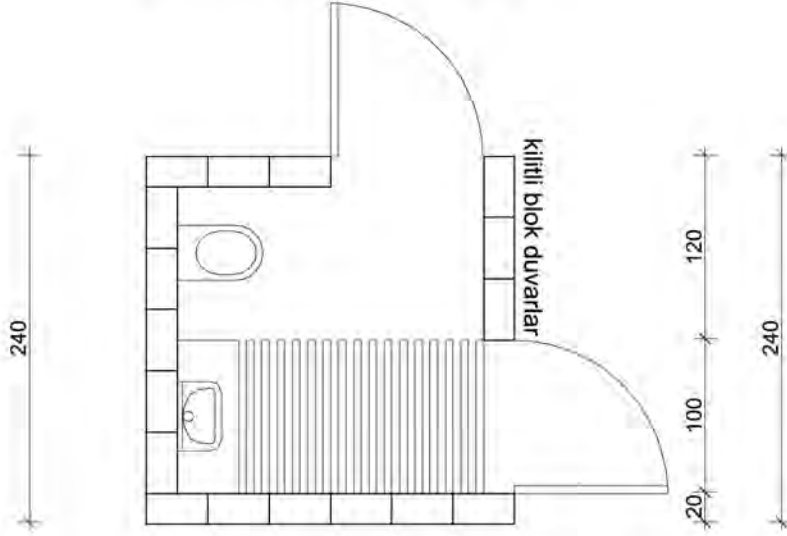
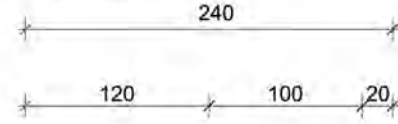


d cephesi

yatak odası ünitesi cepheleri; 1/200

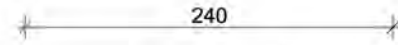
cdclp

▼ a cephesi



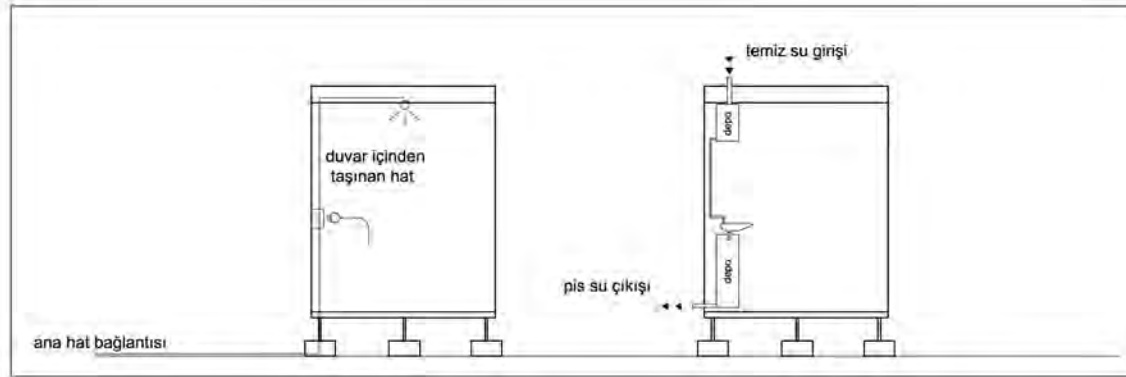
d cephesi

▲ b cephesi

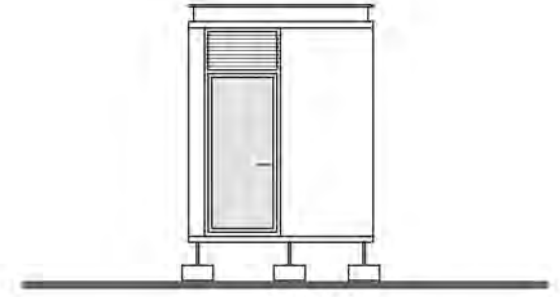


▲ c cephesi

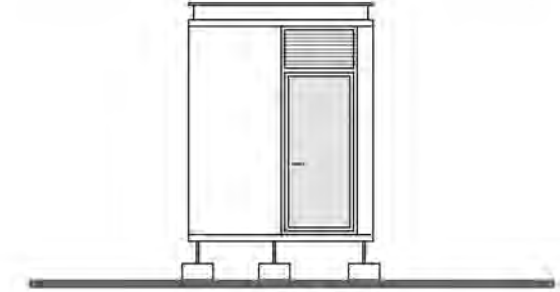
yatak odası ünitesi planı; 1/100



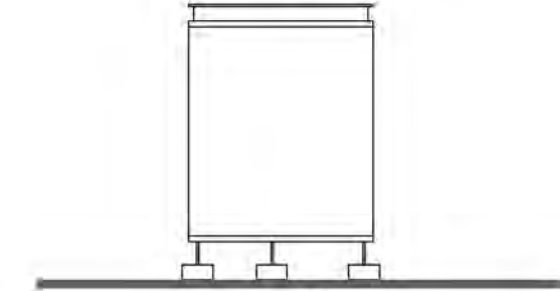
elektrik ve su tesisat şemaları



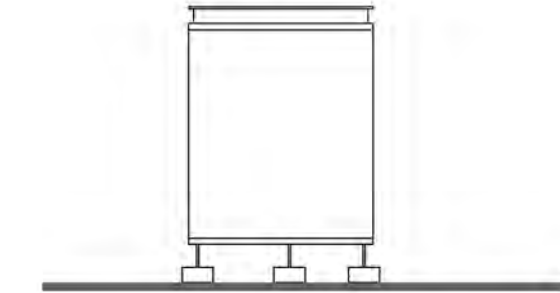
a cephesi



b cephesi



c cephesi



d cephesi

yatak odası ünitesi cepheleri; 1/200

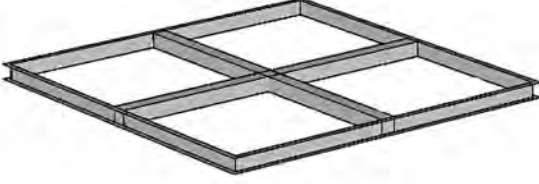
cdrip



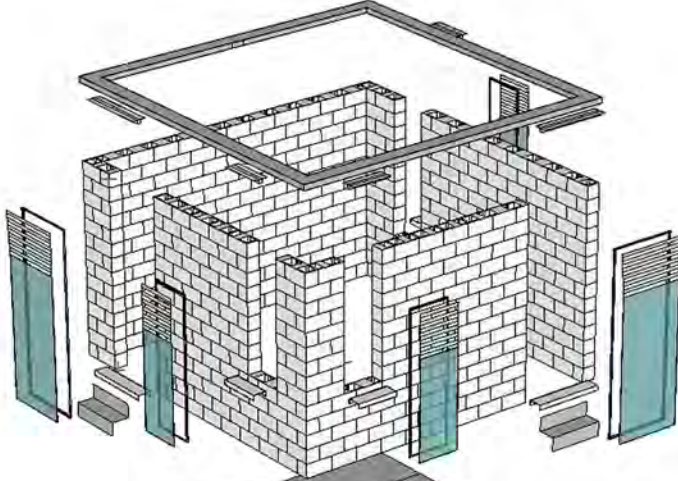
su yalıtım malzemesi
protan membran



OSB levha
120*240*22



çatı konstrüksiyonu
NPU 200

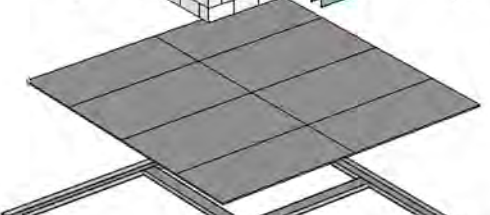


NPU 220

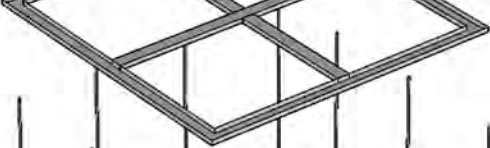
duvar birimi
kilitli blok 40*20*20

profil dogramalar
(40*50*5, 2mm sac, polikarbon levha)

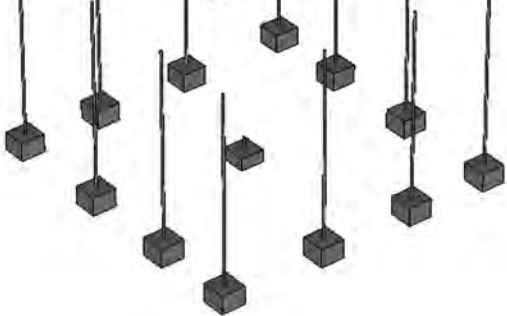
basamaklar
2mm bükme baklava sac



OSB levha
120*240*22



döşeme NPU 220



temel pabuçları 40*40*30 + Ø35 yivli rot

